



BIG SKIES LANDING DOCS

RESERVATIONS
+27 (0)84 220 6114

WWW.BIGSKIES.TRAVEL
reservations@bigskies.travel



MANZENGWENYA AIRSTRIP INDEMNITY

BY AGREEING TO USE AND PARTICIPATE IN SERVICES, TOURS AND ACTIVITIES PROVIDED BY BIG SKIES, I HEREBY BIND MYSELF AND MY ASSOCIATES TO THE FOLLOWING ACKNOWLEDGMENTS, INDEMNITIES, WAIVERS, DISCLAIMERS AND OTHER TERMS:

In this document:

"Big Skies" shall mean and include Big Skies Holdings Limited and all of the companies connected with it in a network of direct and indirect shareholdings (whether holding, subsidiary, associated or affiliated), and all of the companies, organisations, trusts, associations and entities that are directly or indirectly owned, managed and/or controlled by companies or persons in the above-mentioned network, and further including all directors, members, trustees, employees, agents and representatives of the companies, organisations, trusts, associations and entities that form part of the said network; it being further recorded that the provisions of this document that express any benefit for, or confer rights or protections in favour of, the Big Skies Group, constitute irrevocable stipulations for the benefit of all of the companies, organisations, trusts, associations, entities and persons in the Big Skies Group, and such benefits, rights and protections may be adopted and enforced by any one or more of such companies, organisations, trusts, associations, entities and persons, at any time, and in any jurisdiction in the world;

ACKNOWLEDGMENT AND INDEMNIFICATION:

I, THE UNDERSIGNED PILOT, ACTING ON BEHALF OF AND DULY AUTHORIZED BY THE ABOVE OWNER / OPERATOR, HEREBY ACKNOWLEDGE AND AGREE TO THE FOLLOWING:

WE WILL USE THE AIRSTRIP LOCATED ON THE PROPERTY OF BUSTARD TOURISM INVESTMENTS (PTY) LTD (BTI) (OR THE 'AIRSTRIP') ENTIRELY AT OUR OWN RISK.

WE UNDERSTAND AND ACKNOWLEDGE THAT THE AIRSTRIP IS UNLICENSED, UNFENCED, AND MAY NOT BE MAINTAINED REGULARLY. THERE MAY BE VARIOUS HAZARDS, INCLUDING BUT NOT LIMITED TO, THE APPROACHES TO, SITUATIONS ON, AND CONDITIONS OF THE AIRSTRIP.

WE ACKNOWLEDGE THAT BTI PROVIDES NO WARRANTIES, REPRESENTATIONS, OR UNDERTAKINGS REGARDING THE CONDITION OR SAFETY OF THE AIRSTRIP.

BY USING THE AIRSTRIP, WE HEREBY INDEMNIFY AND HOLD HARMLESS BTI AGAINST ANY AND ALL CLAIMS, LOSSES, DAMAGES, OR ACTIONS THAT MAY BE BROUGHT BY US OR ANY THIRD PARTY AS A RESULT OF OR IN CONNECTION WITH THE USE OF THE AIRSTRIP BY US AND THE AIRCRAFT.

WE UNDERTAKE, JOINTLY AND SEVERALLY, TO MEET ALL SUCH CLAIMS DIRECTLY OR TO CONTEST THEM AT OUR OWN EXPENSE.

PLEASE EMAIL TO RESERVATIONS@BIGSKIES.TRAVEL WHEN THE FORM IS COMPLETE

PILOT INFORMATION

Name of pilot	Signature on behalf of owner/company
Owner of the aircraft	Operating on behalf of (company)
Date of landing	ETA
Date of departure	Date of departure

GUEST INFORMATION

Guest name 1	Signature
Guest name 2	Signature
Guest name 3	Signature
Guest name 4	Signature

BIG SKIES MANZENGWENYA AIRSTRIP - BRIEF

MANZENGWENYA AIRSTRIP

- Airfield data: One runways 4/22
- Reference: ZA-0165
- Length: 890m x 9m – Tarmac
- Elevation: 48 metres
- Co-ordinates: Latitude -27.25931 and longitude 32.75225
- Fuel is not available.
- Broadcast ETA and POB blind.
- All aircraft are to maintain a minimum height of 1500ft over all game reserves.

PLEASE NOTE: BIG SKIES MANZENGWENYA AIRSTRIP – USE AT OWN RISK.

Before using the BIG SKIES Runway, all operators/pilots are to fill in and sign an indemnity form and email to Big Skies reservations - reservations@bigskies.travel

PILOTS TO EXERCISE EXTREME CAUTION WITH REGARD TO:

- Birds in area
- Wind shear runway 36
- Game crossing runway – no fences
- High trees on clearway

PILOTS TO PLEASE ADHERE TO THE FOLLOWING ARRIVAL AND DEPARTURE PROCEDURES. (THIS IS TO PREVENT AIRCRAFT OVER-FLYING THE ISIMANGALISO WETLAND PARK AND LODGES LOCATED WITHIN THE RESERVE)

ARRIVAL PROCEDURES:

1. Pilots to route to the Manzengwenya airfield at no less than 3000 ft MSL. (See co-ordinates above)
2. Approaching aircraft to use minimum safe power settings within 10 miles for noise abatement.
3. Please DO NOT TURN ON THE RUNWAY as it is breaking up the tar. Use the existing circle – Northern end.

DEPARTURE PROCEDURES:

1. Pilots must not use taxiway for take-off.
2. Please allow staff members to conduct an up and down pre takeoff to ensure there are no animals or objects entering the runway.
3. Run-ups to be conducted in such a way as to not deflect prop wash towards buildings, fuel installation or other aircraft. Please exercise GOOD airmanship in this regard.

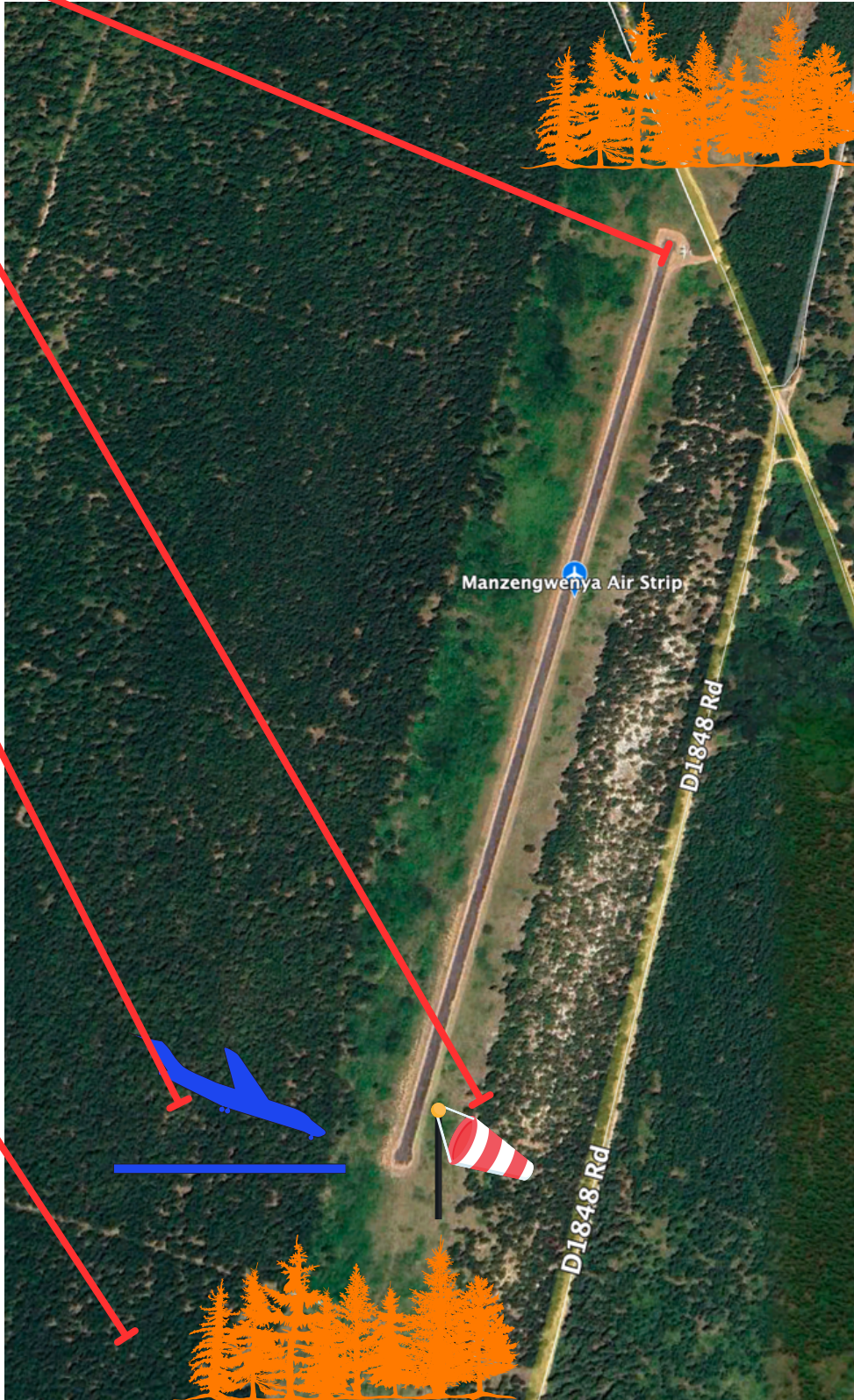
James McCulloch
Managing Director
Big Skies

TURNING
CIRCLE &
PARKING

WINDSOCK

LANDING

TREES ON
CLEARWAY



BIG SKIES MANZENGWENYA AIRSTRIP - LANDING FEES

Landing fee per aircraft for guests travelling by private plane	R 530
4x4 transfer from airstrip to lodge (return) per vehicle	R 450
Security per aircraft (per 12 hour shift) - to be arranged in advance	R 320